

Office to let

Timpuri Noi Square - Building 2

Bucharest, Sector 4, 165 splaiul Unirii

Building information

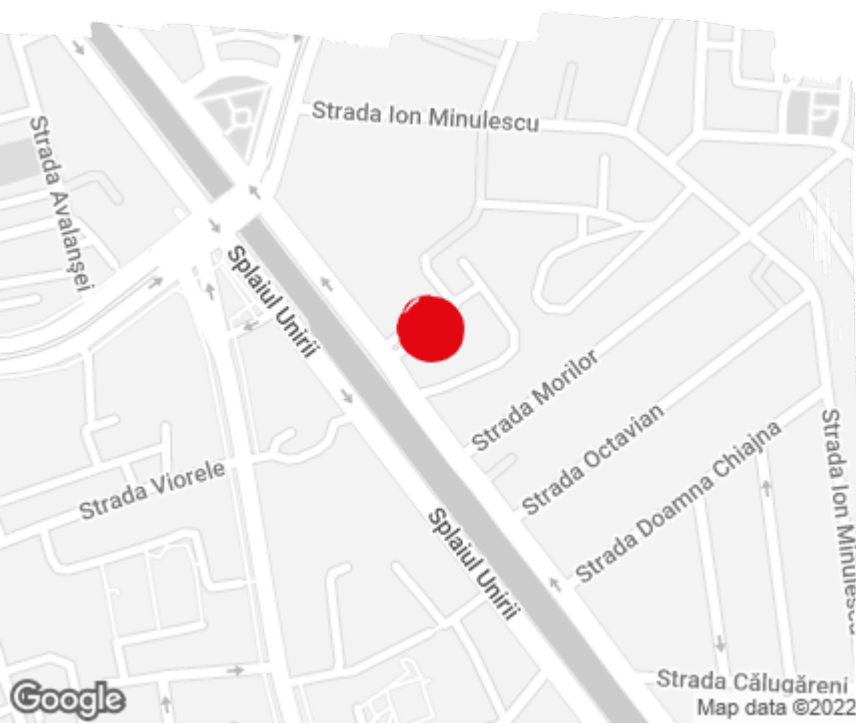
Building status	Existing
Year of construction	2017
Parking ratio	1 / 60 sq m
Total building area	19 069 sq m

Commercial terms

Office space*	after login *
Parking	after login *
Service charge*	after login *
Minimum lease term	after login *
Availability	after login *

* Asking terms for m²/month

Location

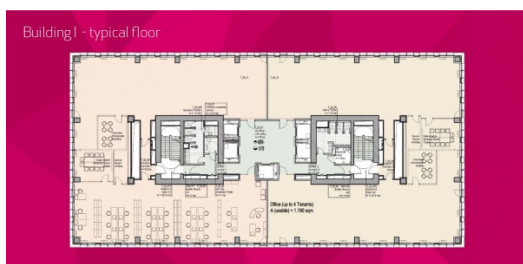


Available space

760 sq m
Available office space

760 sq m
Minimum office space

Typical floor plan



Available space

Floor	Vacant space	Availability
3	please contact us *	please contact us *
Total	after login *	

Public transport

Metro: M1, M3

Bus: 133, 381, 323, 312, 223, N106

Tram: 19

Contact



+40 21 302 3400

More information